

The toilet installation frame is required for **flush-mounted** installation of TECEsquare metal.

Toilet Installation frame

Order No. 9.240.647

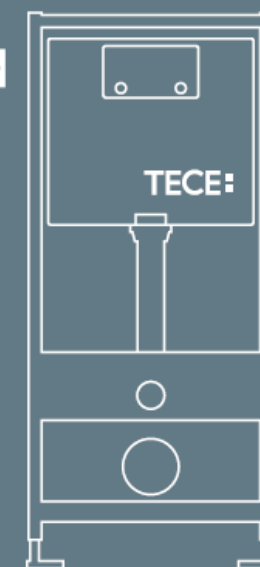
TECEsquare
metal



Installation
frame



TECE cistern

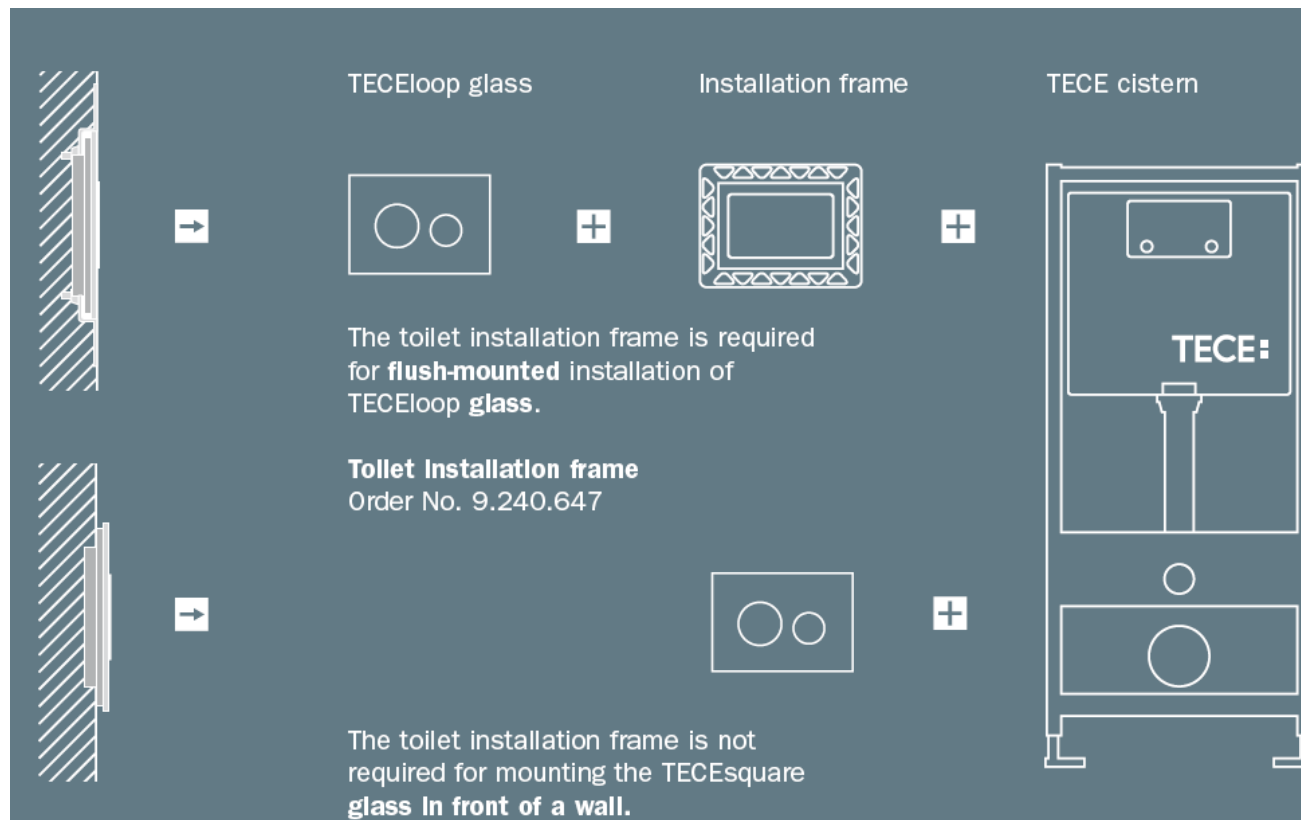


1 > Flush mounted plates are applicable for TECE square metal by default.



Caution! Do not ignore !



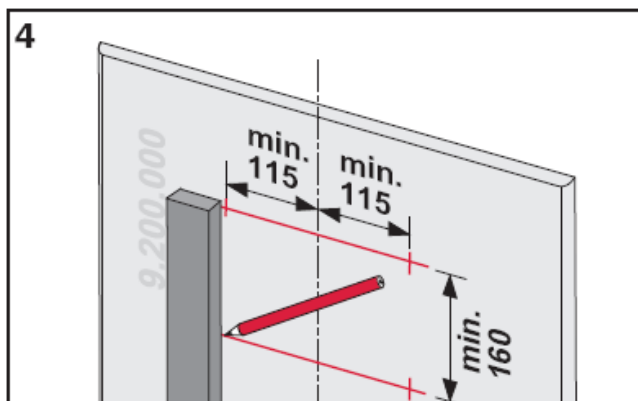
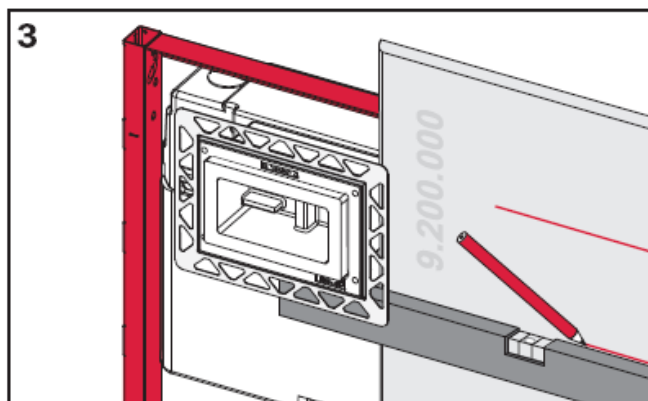
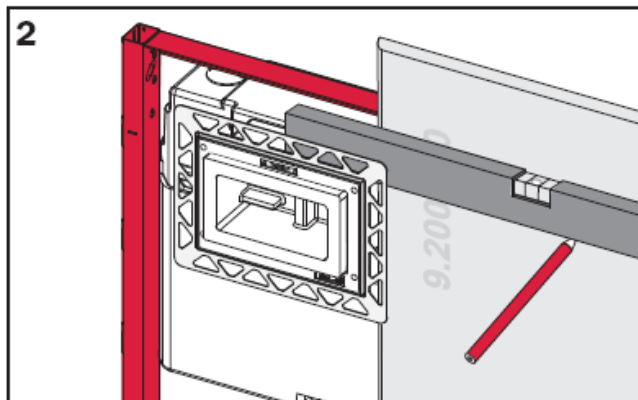
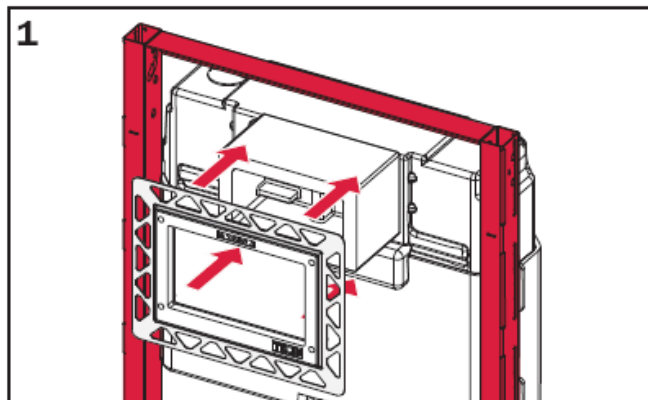


1 > Flush mounted plates are **optional** for all **TECE Glass** plates from **Square** and **Loop** Family .



Caution! Do not ignore !



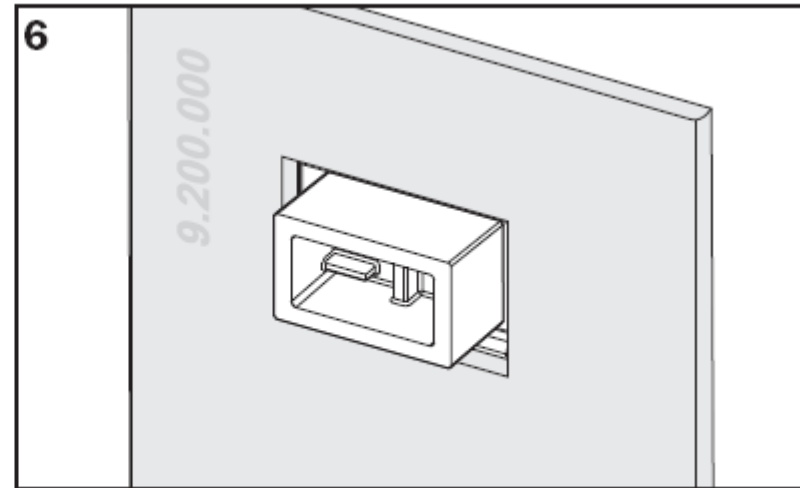
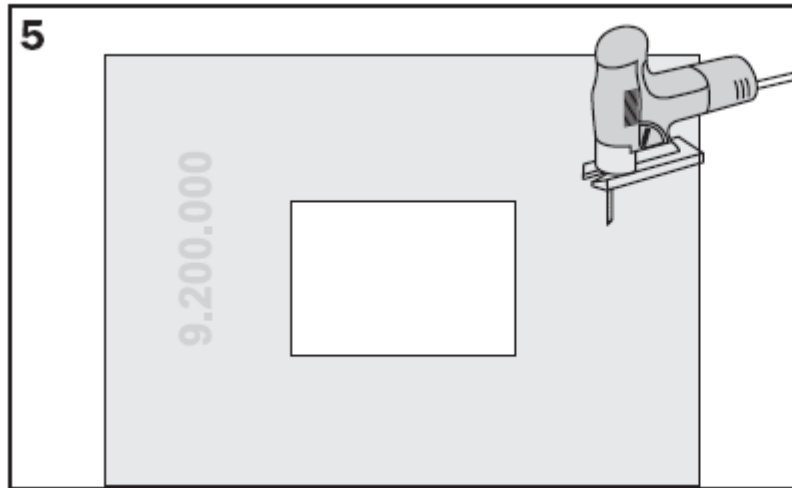


1. Place flush mounting plate
2. Put gyps sheet to maintain a gap of 15 mm from the cistern
- 3 & 4. Make provision for the plate



Caution! Do not ignore !





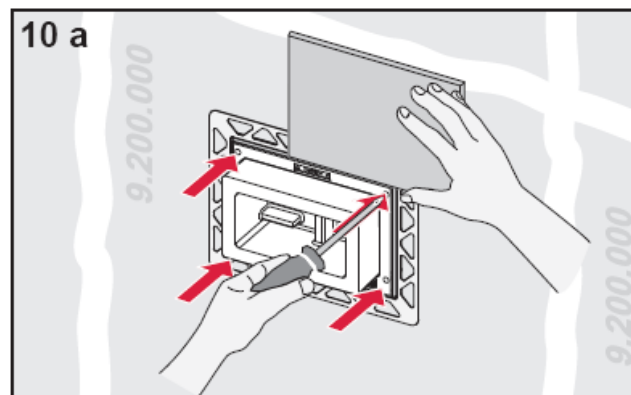
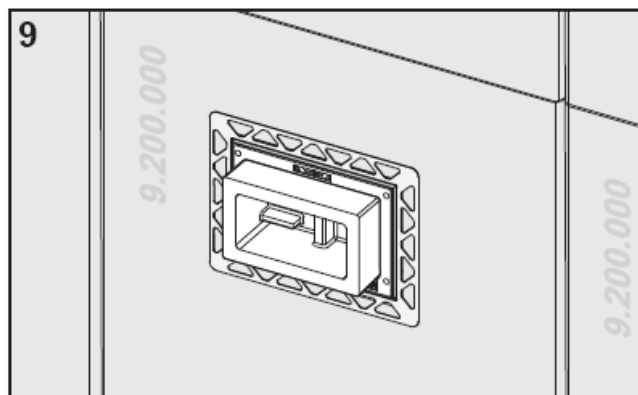
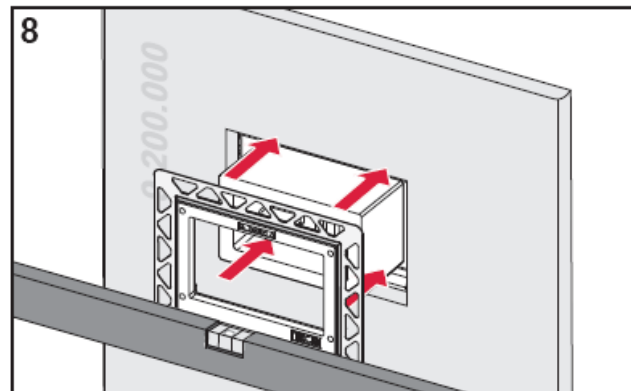
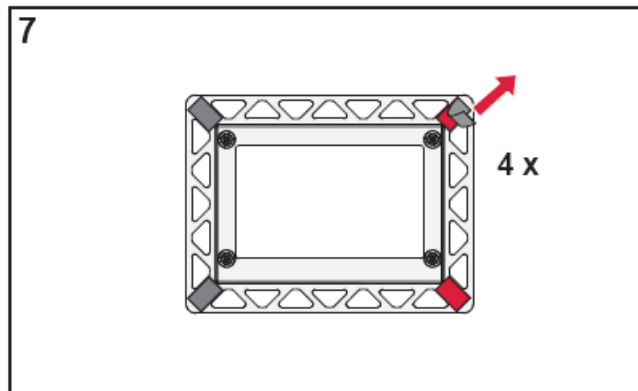
5 . Please mark and cut the gyps sheet as per sizes mentioned.

6 . Place the gyps sheet on the tank.



Caution! Do not ignore !





7. Peel off the sticker

8. Place it on the gyps sheet.

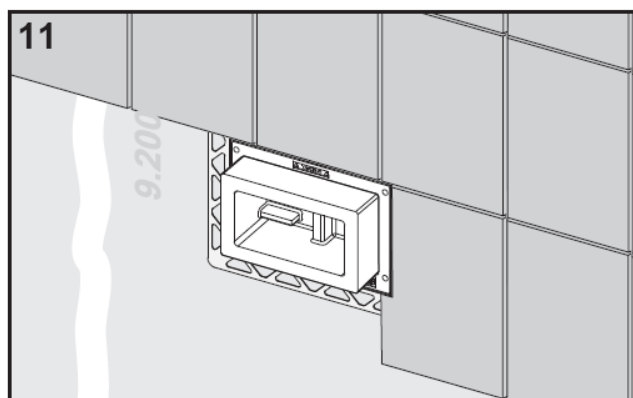
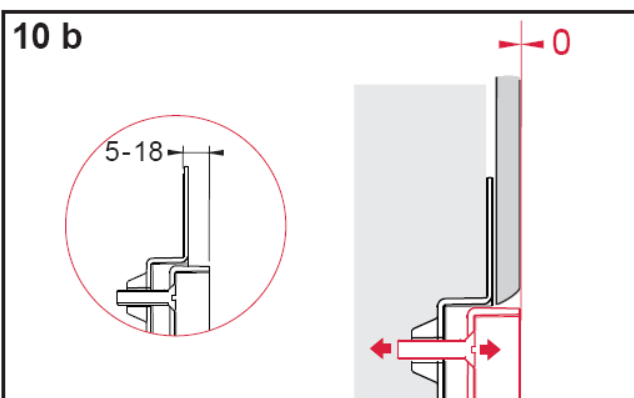
9 , Stick it on the gyps sheet.

10 a. Take the marbel or tile you wish to fix. And unscrew the inner plate matching with the thickness normally 5 to 18 mm.



Caution! Do not ignore !

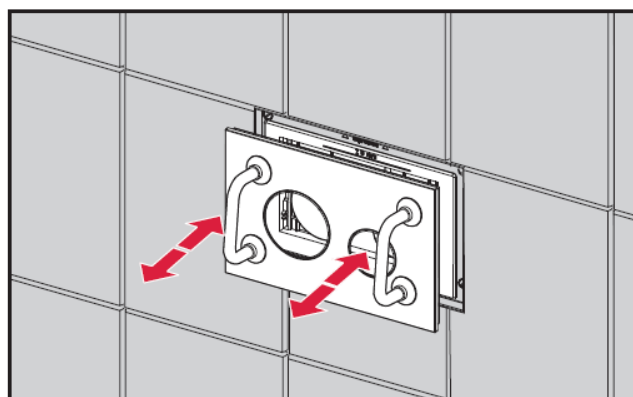
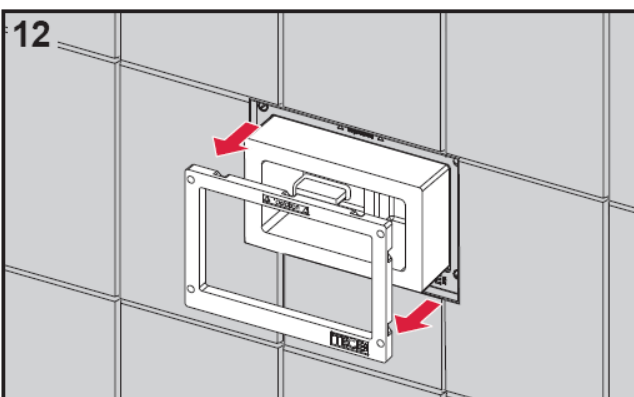




10b. 5 – 18 mm gap has to be maintained.

11 . Fix the tiles.

12. Remove the thermocol packing
13. install the plate.



SP430 021 00 b



Caution! Do not ignore !



Problems v/s solutions for India :

1 > the marbel is of 20 mm : the screws of the inner plate can be extended to the final finish of the marbel. Locally available in the market.

2 > Gyps sheet : Locally available or any packing material is fine. The plumber can manage.



Caution! Do not ignore !

